
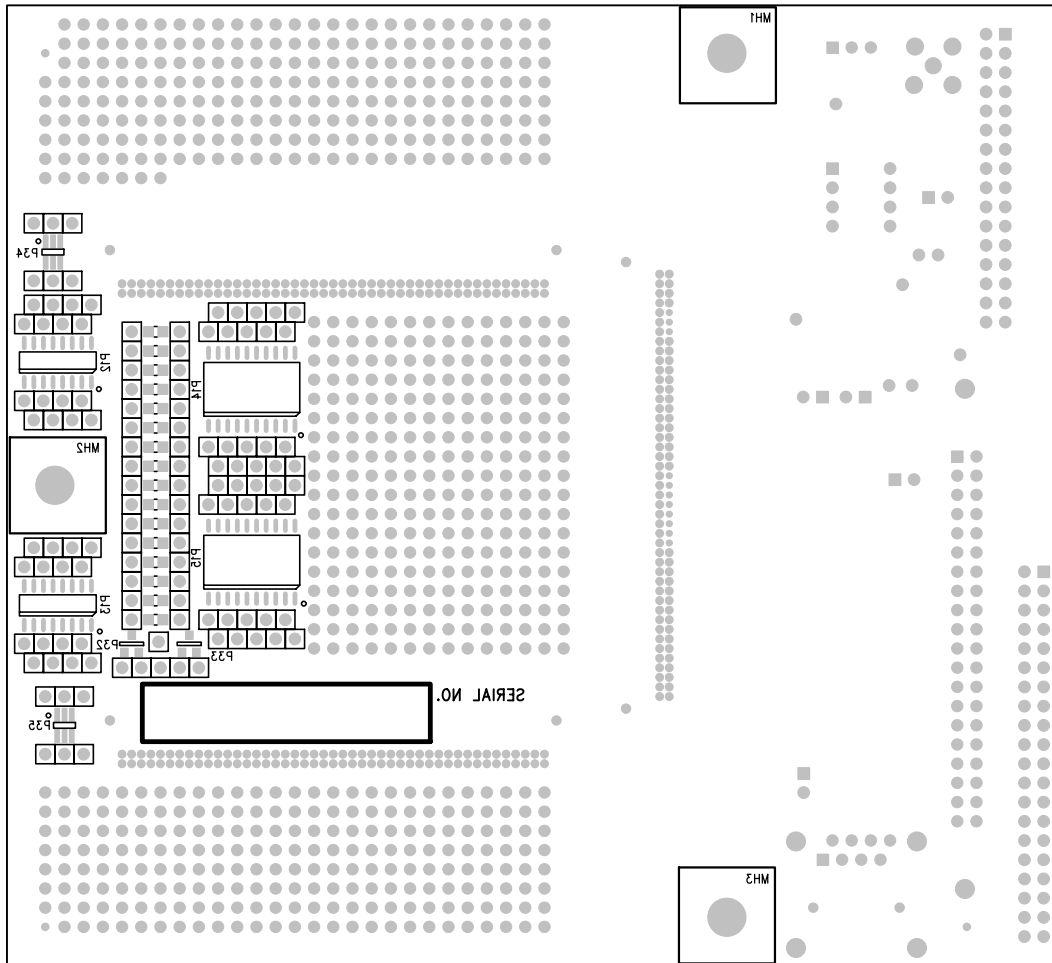

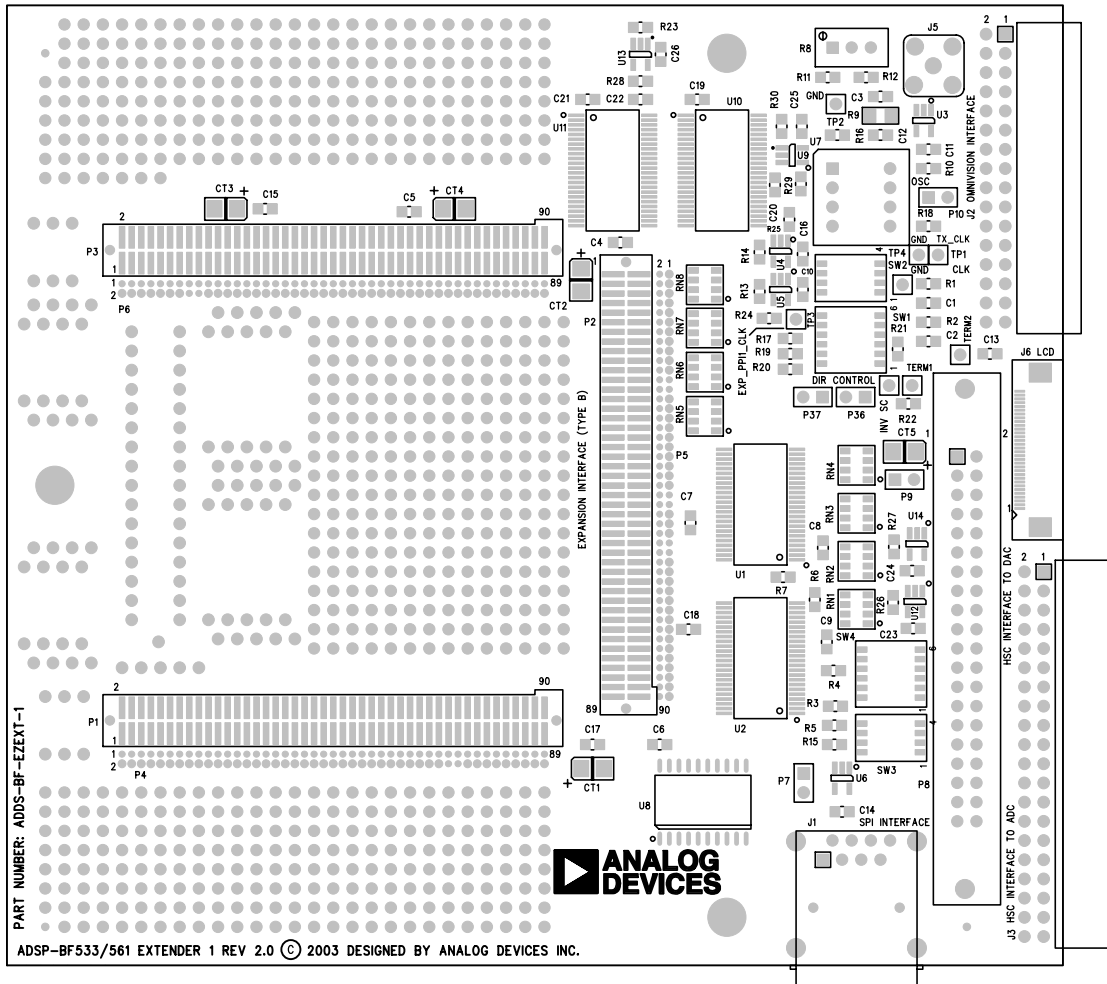



UNLESS OTHERWISE SPECIFIED DIMENSIONS ARE IN INCHES TOLERANCES ARE : .XX +/- .010 .XXX +/- .005	CONTRACT NO.		 20 Cotton Road Nashua, New Hampshire 03063 (603) 883-2430 FAX (603) 882-2655	
	APPROVALS	DATE		
MATERIAL	DRAWN EASTERN CIRCUITS	01/11/06	LAYER 4 BOTTOM SIDE ADSP-BF533/561 EXTENDER 1 PCB	
FINISH	CHECKED			
DO NOT SCALE THIS DRAWING	ENGINEERING		SIZE D	REV. 2.0
	QUALITY		DWG. NO. A0186-2003	
	MANUFACTURING		SCALE 2 : 1	SHEET 4 OF 10

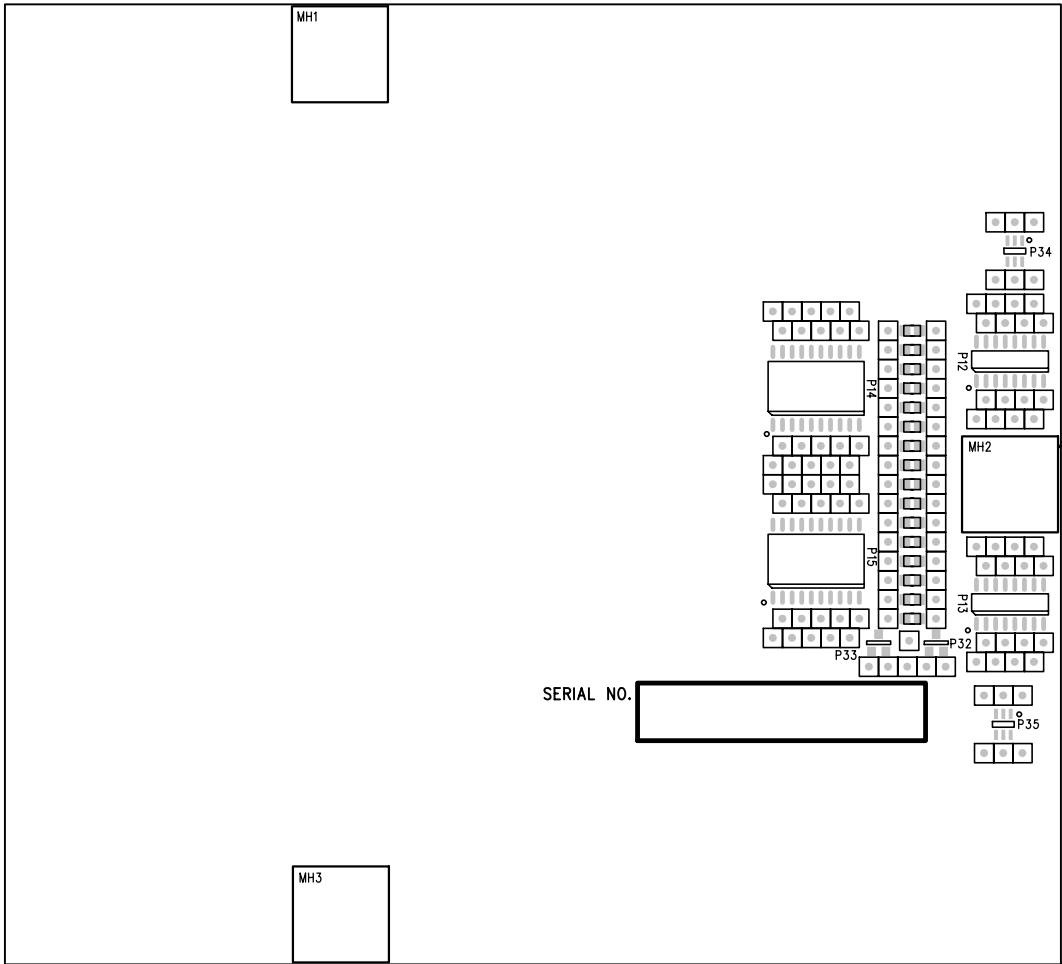


UNLESS OTHERWISE SPECIFIED DIMENSIONS ARE IN INCHES TOLERANCES ARE : .XX +/- .010 .XXX +/- .005	CONTRACT NO.		 ANALOG DEVICES 20 Cotton Road Nashua, New Hampshire 03063 (603) 883-2430 FAX (603) 882-2655				
	APPROVALS	DATE					
	MATERIAL	DRAWN EASTERN CIRCUITS	01/11/06	SILKSCREEN BOTTOM SIDE ADSP-BF533/561 EXTENDER 1 PCB			
		CHECKED					
FINISH	ENGINEERING		SIZE	DWG. NO. A0186-2003		REV. 2.0	
	QUALITY		D				
DO NOT SCALE THIS DRAWING	MANUFACTURING		SCALE 2 : 1		SHEET 8 OF 10		




UNLESS OTHERWISE SPECIFIED DIMENSIONS ARE IN INCHES TOLERANCES ARE : .XX +/- .010 .XXX +/- .005	CONTRACT NO.		 20 Cotton Road Nashua, New Hampshire 03063 (603) 883-2430 FAX (603) 882-2655
	APPROVALS	DATE	
MATERIAL	DRAWN EASTERN CIRCUITS	01/11/06	SILKSCREEN TOP SIDE ADSP-BF533/561 EXTENDER 1 PCB
FINISH	CHECKED		
DO NOT SCALE THIS DRAWING	ENGINEERING		SIZE D DWG. NO. A0186-2003 REV. 2.0
	QUALITY		
MANUFACTURING		SCALE 2 : 1	SHEET 7 OF 10

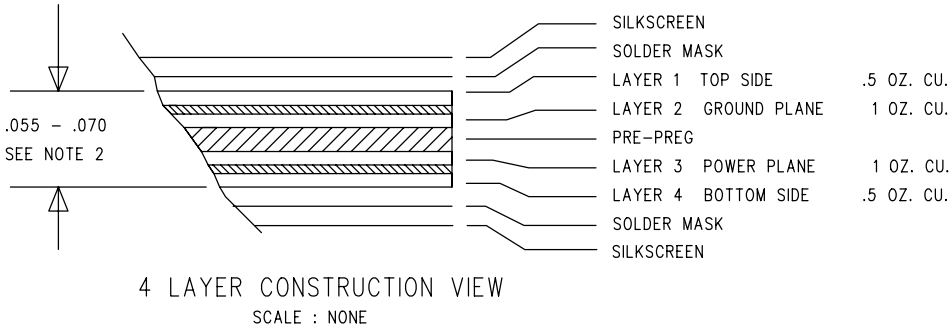
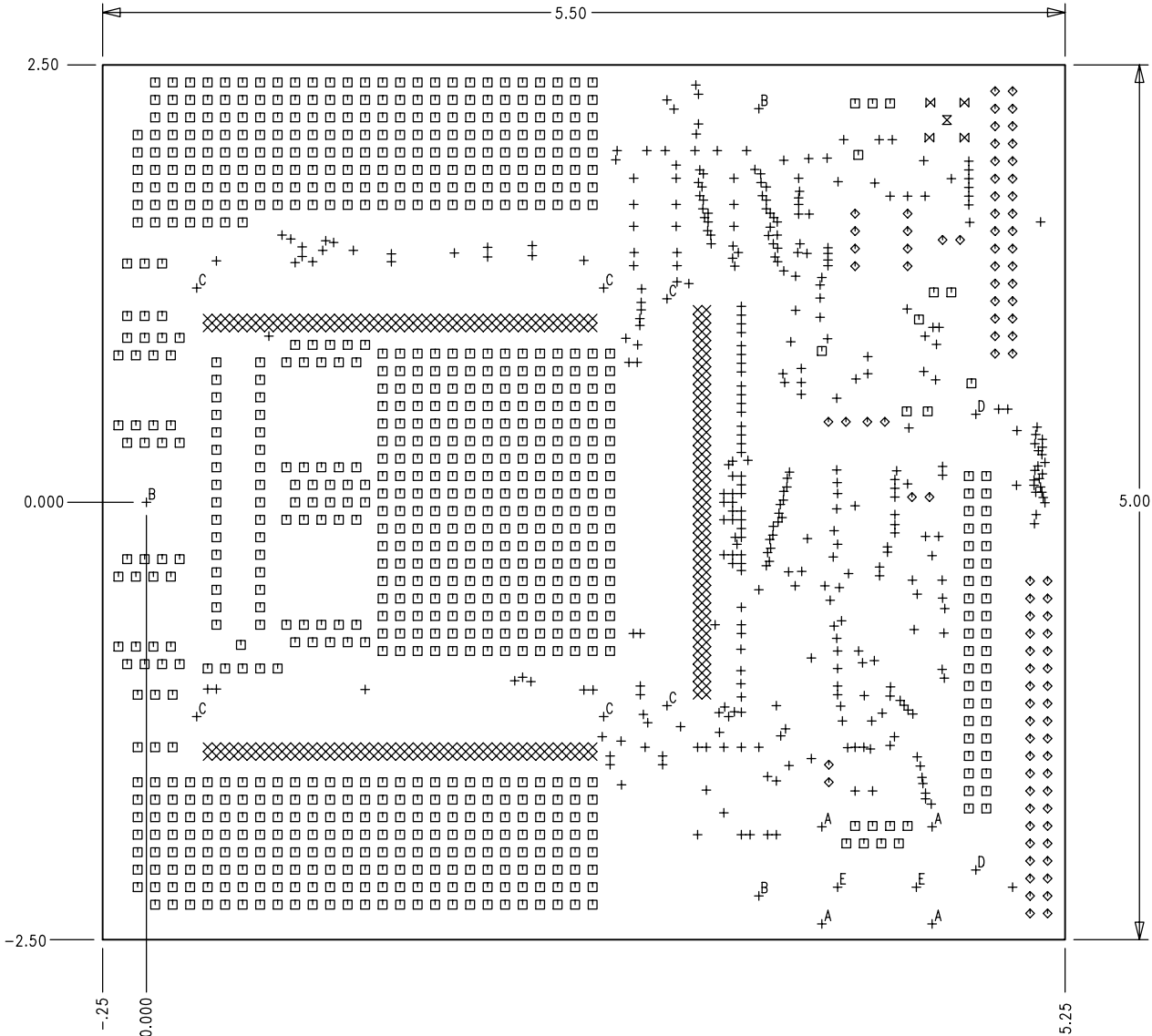
REVISIONS				
REV	DESCRIPTION OF CHANGE	DRFTR	DATE	APPROVED
1.0	NEW RELEASE	EASTERN CIRCUITS	10/06/03	
2.0	REFER TO EC02005-151	EASTERN CIRCUITS	01/11/06	



RUBBER FEET TYP 3 PL

UNLESS OTHERWISE SPECIFIED DIMENSIONS ARE IN INCHES TOLERANCES ARE : .XX +/- .010 .XXX +/- .005	CONTRACT NO.		 <div>20 Cotton Road Nashua, New Hampshire 03063 (603) 883-2430 FAX (603) 882-2655</div>	ASSEMBLY DRAWING BOTTOM SIDE ADSP-BF533/561 EXTENDER 1 PCB	
	APPROVALS	DATE			
MATERIAL	DRAWN EASTERN CIRCUITS	01/11/06	SIZE D		REV. 2.0
FINISH	CHECKED				
DO NOT SCALE THIS DRAWING	MANUFACTURING		DWG. NO. ASSMAA0186-2003		
SCALE 2 : 1		SHEET 2 OF 2			


REVISIONS				
REV	DESCRIPTION OF CHANGE	DRFTR	DATE	APPROVED
1.0	NEW RELEASE	EASTERN CIRCUITS	10/06/03	
2.0	REFER TO ECO2005-151	EASTERN CIRCUITS	01/11/06	

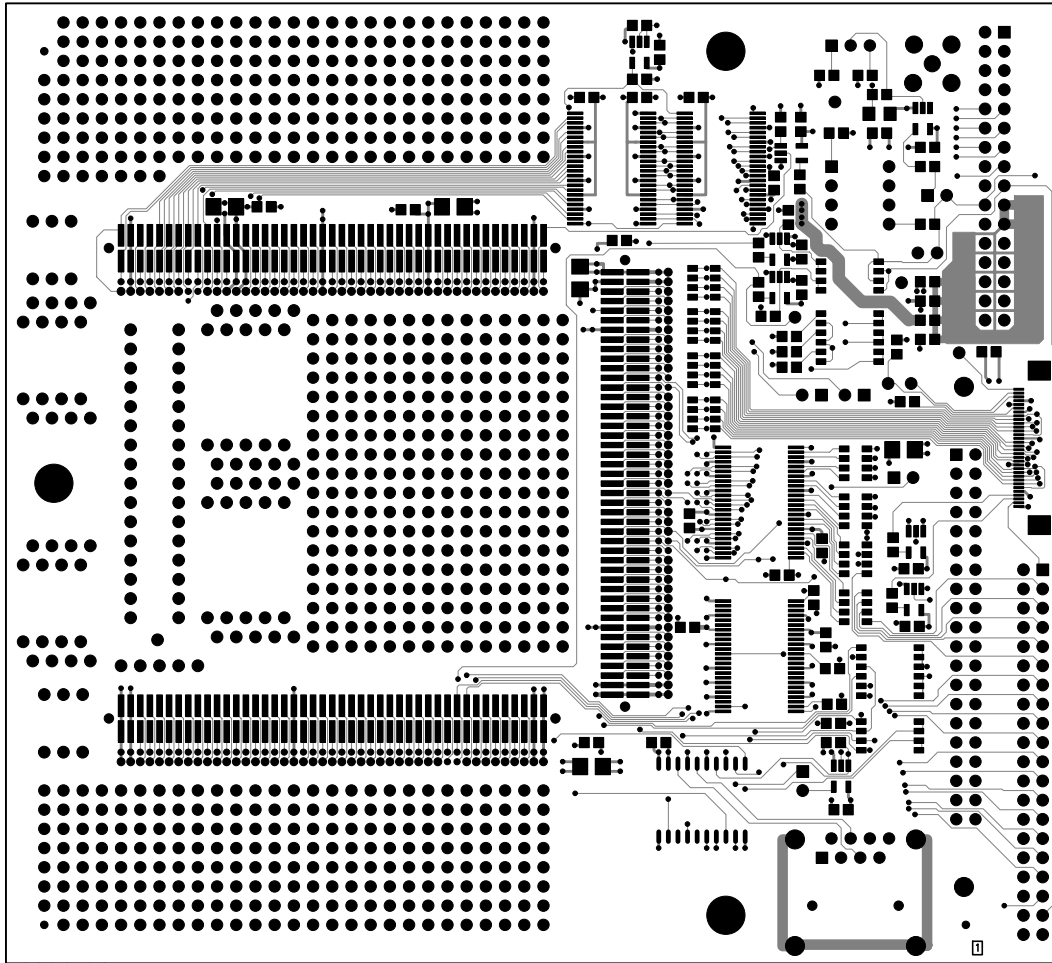



UNLESS OTHERWISE SPECIFIED

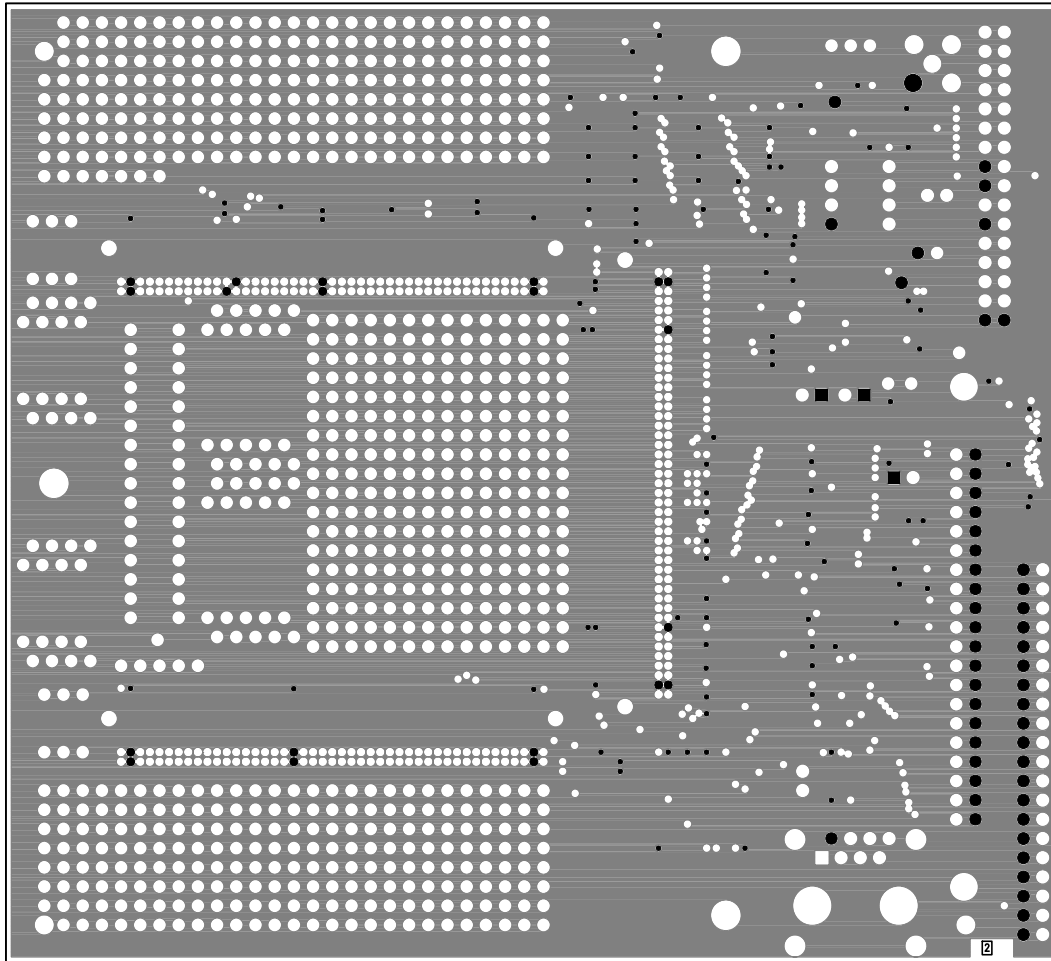
- BOARD TO BE FABRICATED PER IPC-6012A, CLASS 2.
- MATERIAL: POLYCLAD FR-370HR OR EQUIVALENT. OUTER LAYERS 1/2 OZ/SQFT CU INNER LAYERS 1/2 OZ/SQFT CU FINISHED .062 (.055 MIN .070 MAX SEE DETAIL). VENDOR MAY ADJUST THICKNESS TO FULFILL NOTE 9.
- PLATING: ADDITIONAL CU PLATING 1 OZ/SQFT ALL HOLES PLATED THROUGH, EXCEPT AS NOTED IN HOLE LEGEND. MINIMUM PTH BARREL THICKNESS = 0.0008" MINIMUM AVERAGE PER IPC-6012A WITH AMENDMENT 1, CLASS 2 REQUIREMENTS. WITH NO SINGLE MEASUREMENT LESS THAN 0.00071 IN THE PLATED HOLES.
- FINISH: SURFACES TO BE COATED BY ENIG OF 2 TO 10 MICROINCHES OVER A MINIMUM OF 60-200 MICROINCHES OF LOW STRESS NICKEL.
- SOLDERMASK: SOLDER MASK TO BE TRANSPARENT GREEN LPI BOTH SIDES PER GERBER FILES.
- SILKSCREEN: WHITE EPOXY INK, APPLY TO BOTH SIDES PER GERBER FILES.
- ARTWORK: MINIMUM FEATURE SIZE = 0.005
MINIMUM AIR GAP = 0.005
- ALL DIMENSIONS ARE IN INCHES.
- CONTROLLED IMPEDANCE: BOARD TO BE BUILT TO YIELD CONTROLLED IMPEDANCE OF 50 OHMS - 70 OHMS ON ALL .005" LINE WIDTHS
- DO NOT ADD NON-FUNCTIONAL COPPER THIEVING ON OPEN AREAS OF OUTER LAYERS. THIEVING IS ALLOWED ON INNER LAYERS, UNLESS OTHERWISE SPECIFIED.
- VIAS SHOULD BE COVERED ACCORDING TO ONE OF THE FOLLOWING METHODS.
METHOD 1: VIAS MUST BE FILLED WITH SOLDERMASK MATERIAL AFTER ELECTROLESS NICKEL/IMMERSION GOLD AND BEFORE PRIMARY LPI MASK. AFTER THE FILL IS CURED, THE PRIMARY MASK IS THEN APPLIED WITH NO VIA APERTURES BOTH SIDES.
METHOD 2: AFTER APPLICATION OF FULL BODY ELECTROLESS NICKEL/IMMERSION GOLD, APPLY PRIMARY MASK WITH REDUCED VIA APERTURES THAT ARE 6 MILS LARGER THAN DRILLED HOLE DIAMETER BOTH SIDES. THEN APPLY SOLDER MASK PLUG ON COMPONENT SIDE.
- VIA HOLES (.012) REQUIRE TANGENCY ONLY, INSTEAD OF ANNULAR RING.
- TEARDROP PADS ARE ACCEPTABLE WHERE NEEDED.
- USE IPC-D-356A NETLIST AS SUPPLIED FOR CHECKING.
- BUILD AS 1-UP PCB.


SIZE	QTY	SYM	PLATED	TOL
12	372	+	YES	+0.003-0.012
18	270	×	YES	+/-0.003
37	868	□	YES	+/-0.003
40	90	◇	YES	+/-0.003
60	1	⊠	YES	+/-0.003
67	4	⊞	YES	+/-0.003
76	4	+ ^A	YES	+/-0.003
125	3	+ ^B	YES	+/-0.005
53	6	+ ^C	NO	+0.003-0.000
116	2	+ ^D	NO	+/-0.005
128	2	+ ^E	NO	+/-0.005

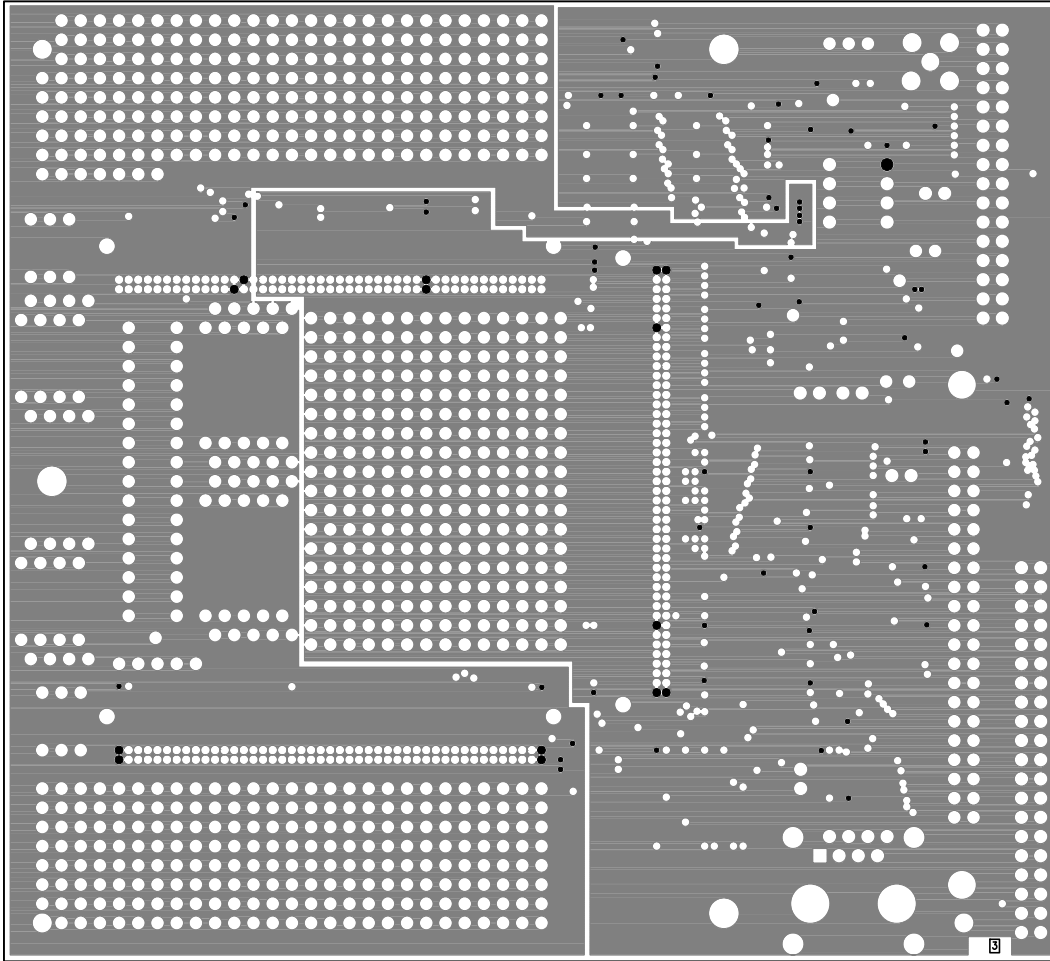
UNLESS OTHERWISE SPECIFIED DIMENSIONS ARE IN INCHES TOLERANCES ARE : .XX +/- .010 .XXX +/- .005	CONTRACT NO.		 20 Cotton Road Nashua, New Hampshire 03063 (603) 883-2430 FAX (603) 882-2655	
	APPROVALS	DATE		
MATERIAL SEE NOTES	DRAWN EASTERN CIRCUITS	01/11/06	FABRICATION DRAWING ADSP-BF533/561 EXTENDER 1 PCB	
FINISH SEE NOTES	CHECKED			
DO NOT SCALE THIS DRAWING	ENGINEERING		SIZE D	REV. 2.0
	QUALITY		DWG. NO. A0186-2003	
MANUFACTURING		SCALE 2 : 1	SHEET 1 OF 1	




UNLESS OTHERWISE SPECIFIED DIMENSIONS ARE IN INCHES TOLERANCES ARE : .XX +/- .010 .XXX +/- .005	CONTRACT NO.		 20 Cotton Road Nashua, New Hampshire 03063 (603) 883-2430 FAX (603) 882-2655	
	APPROVALS	DATE		
MATERIAL	DRAWN EASTERN CIRCUITS	01/11/06	LAYER 1 TOP SIDE ADSP-BF533/561 EXTENDER 1 PCB	
FINISH	CHECKED			
DO NOT SCALE THIS DRAWING	ENGINEERING		SIZE D	REV. 2.0
	QUALITY		DWG. NO. A0186-2003	
	MANUFACTURING		SCALE 2 : 1	SHEET 1 OF 10



UNLESS OTHERWISE SPECIFIED DIMENSIONS ARE IN INCHES TOLERANCES ARE : .XX +/- .010 .XXX +/- .005	CONTRACT NO.		 20 Cotton Road Nashua, New Hampshire 03063 (603) 883-2430 FAX (603) 882-2655	
	APPROVALS	DATE		
MATERIAL	DRAWN EASTERN CIRCUITS	01/11/06	LAYER 2 GROUND PLANE ADSP-BF533/561 EXTENDER 1 PCB	
FINISH	CHECKED			
DO NOT SCALE THIS DRAWING	ENGINEERING		SIZE D	REV. 2.0
	QUALITY		DWG. NO. A0186-2003	
	MANUFACTURING		SCALE 2 : 1	SHEET 2 OF 10



UNLESS OTHERWISE SPECIFIED DIMENSIONS ARE IN INCHES TOLERANCES ARE : .XX +/- .010 .XXX +/- .005	CONTRACT NO.		 20 Cotton Road Nashua, New Hampshire 03063 (603) 883-2430 FAX (603) 882-2655	
	APPROVALS	DATE		
	MATERIAL	DRAWN EASTERN CIRCUITS 01/11/06	LAYER 3 POWER PLANE ADSP-BF533/561 EXTENDER 1 PCB	
	FINISH	CHECKED		
DO NOT SCALE THIS DRAWING	ENGINEERING		SIZE D	DWG. NO. A0186-2003
	MANUFACTURING		SCALE 2 : 1	REV. 2.0
			SHEET 3 OF 10	